

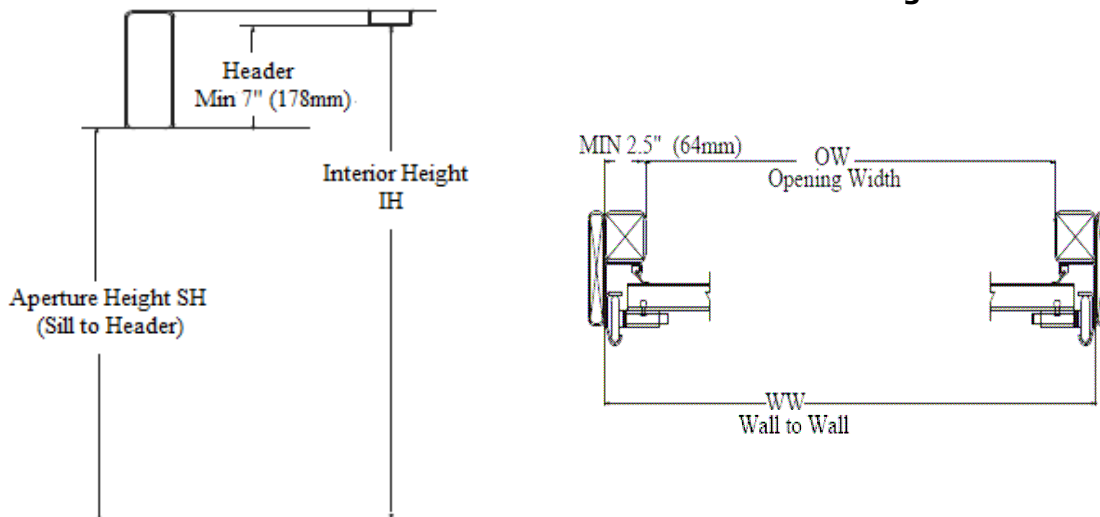
## **Installation Guide - Wide Slat**

### **Preparation**

Please read and follow installation procedures before attempting to install the door.

1. Check door sizes with your order information. The critical measurements are:-
  - Aperture Height or Sill to Header (SH) – the vertical distance between the underside of the header and top of sill/floor surface.
  - Header depth – the vertical distance from the underside of the header to the bottom of the roof bow. Generally the minimum effective header requirement is 178mm (7"). If you have less than that, it may be possible to extend the header downwards with a channel or other formed metal.
  - Wall to Wall (WW) – the horizontal distance between vertical track assembly mounting outer surfaces. The minimum standard post width is 64mm (2.5").

**Figure1**

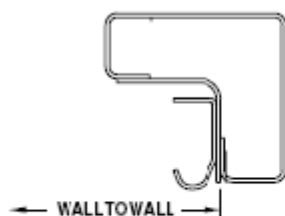


2. Check components to make sure you have all the necessary items and are familiar with them. For a complete new installation, the standard packaging includes:
  - Two partially assembled door panel sets – lower and upper (plus additional intermediate slats if required for taller doors)
  - Bracket, pins, rollers and roller washers/spacers
  - Two side seals
  - Balancer spring assembly and 3 mounting brackets
  - Set of vertical tracks
  - Set of horizontal tracks
  - Rubber track stops, bolts and nuts

## **Installation Guide - Wide Slat**

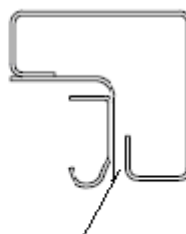
### **Install Vertical Tracks**

1. Temporarily secure track so that they are square against the sidewall and post. See following figures for reference:



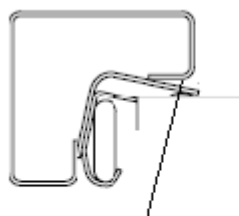
**CORRECT**

Figure 2



**MUST BE SUPPORTED**

Figure 3



**MUST NOT BE TWISTED v PILLAR**

Figure 4



Figure 5

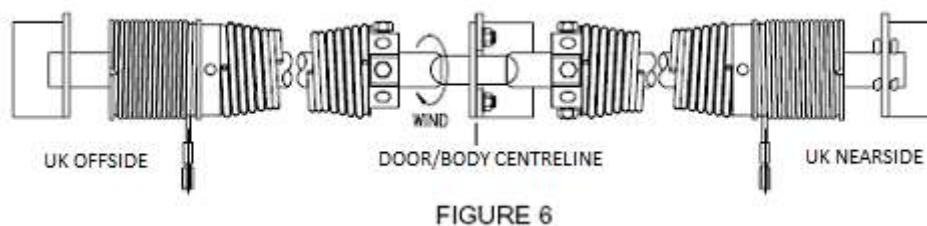
2. Check that they are parallel with each other by taking measurements at top, bottom and middle. Allow no more than 3mm (1/8") difference. Shim accordingly, if necessary. Do not force. Secure in place by welding, riveting or bolting. Caution: be very careful when putting anything into the tracks. Fasteners should be chosen that have a low head profile. They must be installed squarely – never at an angle. A protruding head will interfere with roller travel, causing potential difficulty of operation and excess/premature wear on the door with resultant hardware and maintenance trouble. See figure 5 for reference.
3. Secure vertical track to post and sidewall by welding, riveting or bolting. NB Tracks are supplied with balancer brackets already attached.
4. Use sealant along seam between mounting angle and post.

### **Install Horizontal Tracks**

1. It is very important to continue consistent track spacings ("WW" measurement) and parallel alignment from the vertical tracks onto the horizontals.
2. Join horizontal tracks with vertical using the pre-formed "tongue and groove" notches. Make sure the faces align flush at this joint and do not overlap one another. If not done correctly this will prevent smooth passage of the rollers across the joint.
3. Check that top tracks are horizontal/parallel with roof. Secure in place with rivets, bolts or weld in a minimum of 4 places. Make sure distance between tracks is maintained throughout, especially at the radius, an area more prone to misalignment.

## **Installation Guide - Wide Slat**

### **Install Balancer**



1. The centre mounting bracket with clamp is already fitted to the balancer shaft. Loosen the clamp and install the centre mounting bracket onto the header. Make sure all 3 mounting brackets are now correctly aligned to keep balancer shaft straight. See figure 6.
2. Install the balancer assembly set into the three brackets, left and right brackets are on the mounting angles and the centre bracket is on the header. The end of the shaft with pin holes is at the right hand end of the shaft (as viewed from inside truck looking outward).
3. Install pins through holes at the end of balancer shaft, to prevent lateral movement of shaft.
4. Fasten center clamp on center bracket.

### **Install Door Unit**

1. Clamp locking pliers firmly in both horizontal tracks just above the radius about 400mm from the header. This will keep the door from dropping down once it is rolled into the track.
2. Using 2 persons carry the lower half of the door into the unit, outer face upward, with break joint first, bottom of door nearest rear. (Tip door slightly to pass through the frame aperture).
3. Lower one edge only, resting it on the floor. Install rollers into opposite side end hinges and bottom roller bracket.

*NB:- Special washer/spacers should be placed on roller shafts at first joint (second roller) from bottom and top of door. Depending upon the amount of sideways play, select appropriate number of washers to ensure correct centralisation of the door and free running of the rollers in the tracks. These washers are very important, as they accurately position the door, keeping it from binding on the track, helping cables wind freely on the drum and provide for correct side seal and lock operation.*

4. Bring door back to level and repeat 3 with opposite edge of door. *Take care to prevent rollers from falling out during this and subsequent steps until door is inserted fully into tracks.*
5. Move door section to the front of the load space by sliding it along the floor on the rollers of one edge.
6. Using stepladders by the open ends of the horizontal tracks keeping the door level, lift it and slide the door rollers into the open track ends, bottom slat of door first.
7. Keeping door flat, raise section and insert rollers into track.
8. Push door carefully down the tracks until the locking pliers stop it.
9. Repeat above steps 2 - 8 with top section (and first any intermediate additional slats if required).

## **Installation Guide - Wide Slat**

10. Install rubber track stops, bolts and nuts.
11. Join the sections of the door together, fully inserting all knurled hinge pins to link the male/female hinge halves.

### **Tensioning Balancer**

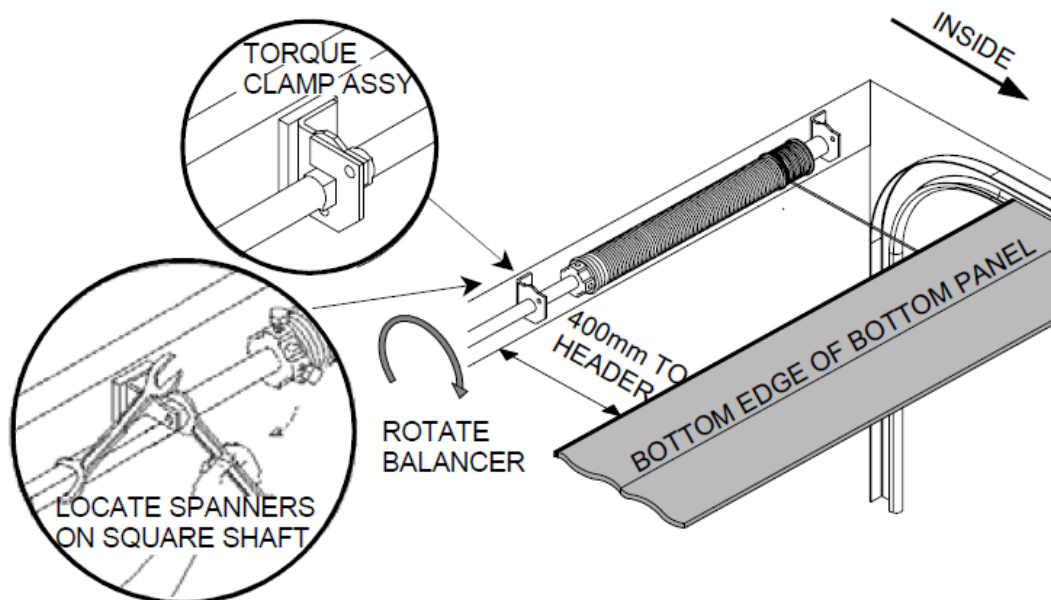


FIGURE 7

1. Check shaft end pins and centre bracket have been installed as outlined above. Remove torque clamp from centre bracket. Do not loosen winding cone/drum setscrews. Fit cable ends to both drums and tension equally by turning shaft using open-ended spanners on central square section of shaft. It is important that the end of the cable is inserted correctly and cables wind correctly into grooves on cable drum to avoid fouling as drums rotate. See Fig 7
2. Wind about 4 full turns and refit and tighten central torque clamp. Make sure cable drum is positioned about 3-4mm (1/4") from balancer.
3. Remove both sets locking pliers from tracks. Carefully allow door to move to its "normal" open position.
4. Check door operation. Cable should wind onto drum evenly and not be pulled over onto spring area, or overlap onto itself in adjacent drum grooves
5. If necessary, adjust spring tension adding or subtracting in 1/4 turns. A properly balanced door will not raise itself up, will stay full open not drop, and will open and close easily.

### **Adjust Top Panel**

1. With the door closed remove the 2 nuts on top roller bracket/closure bases.
2. Insert rollers in track and then into top roller brackets.
3. Place brackets back on bases with tapered ends down and loosely replace nuts.
4. Adjust to obtain optimum top seal position against header. Moving bracket downward will move top seal closer to header and create a tighter seal of the top slat against the side seals.

## **Installation Guide - Wide Slat**

NB Adjusting it down too far may however leave too little clearance for it to pass the balancer/springs when door is opened.

5. Tighten nuts.
6. Notch top seal for cables.

### **Install Side Seals**

After properly installing the vertical and horizontal tracks, insert the side seals. Push into gap between track and mounting angle using a bolster or steel plate. Start at bottom and work gradually upward. To avoid damage/distortion to seal, do not try to push too far in at one time, but make several passes of small movements.

### **Check and Test Functions**

1. Lock operation
2. Balancer adjustment
3. Top panel adjustment
4. Cables move unobstructed
5. Door centered in opening
6. Door operates freely
7. Side, top and bottom seals function properly
8. Cosmetics

### **Door Unit Overview**

